

Prion Marine Seismic Survey

Bass Strait



Project Update | 19 October 2021



Project Summary

Beach Energy is planning to undertake a three-dimensional (3D) marine seismic survey (the Prion Survey) to enable assessment of natural gas reservoirs (see map). The project will operate under an Environment Plan (EP) that has been accepted by the National Offshore Petroleum Safety and Environmental Management Authority (NOPSEMA). See [this link](#).

Location

The Prion Survey will be carried out in Bass Strait in Commonwealth waters, 73 km east of King Island, 57 km north of Stanley in Tasmania and 105 km south of Wonthaggi at the closest points (see map).

Timing

The Prion Survey is expected to take between 35 and 50 days to complete and key dates include:

- 5 November: start deploying equipment
- 6 November: vessel present in operation area
- 8 November: survey acquisition to commence
- 31 December: latest date of survey activities.

All dates and timings are subject to weather conditions and any whale sightings that may require the survey to stand by temporarily.

Upon completion of the Prion Survey, Beach will be conducting a separate collaborative research project for approximately 4 days. Click on this link for further information.

Safety exclusion zone

The survey vessel will tow equipment 8 km long and 1 km wide, travel around 4-5 knots and have limited manoeuvrability. To avoid safety and entanglement risks fishing equipment should not be in the area at any time during the survey and vessels should not approach closer than:

- 6 nautical miles astern
- 2 nautical miles ahead
- 3 nautical miles port / starboard.

A Notice to Mariners will be issued by the Australian Hydrographic Office for vessel clearances.

Vessel contact details

Marine users can communicate with the survey and support vessels at any time via channel 16 or the contact details below:

Survey Vessel - Geo Coral

Call sign: LACA8

Contact numbers: +47 23 678 541 / +47 23 678 540

Support Vessels

- **Mariska G**
 - **Call sign:** 3EZ8
 - **Contact number:** +31 702 170 186
- **Farquarson**
 - **Call sign:** VJT6343
 - **Contact numbers:** 0409 581 278
+870 776 134 952 (sat)

Fair Ocean Access Procedure

Beach has a procedure in the event of a direct economic loss to a commercial fisher from the survey. Click [here](#) for further information.

Further information

See the Beach website for further information or click [here](#).

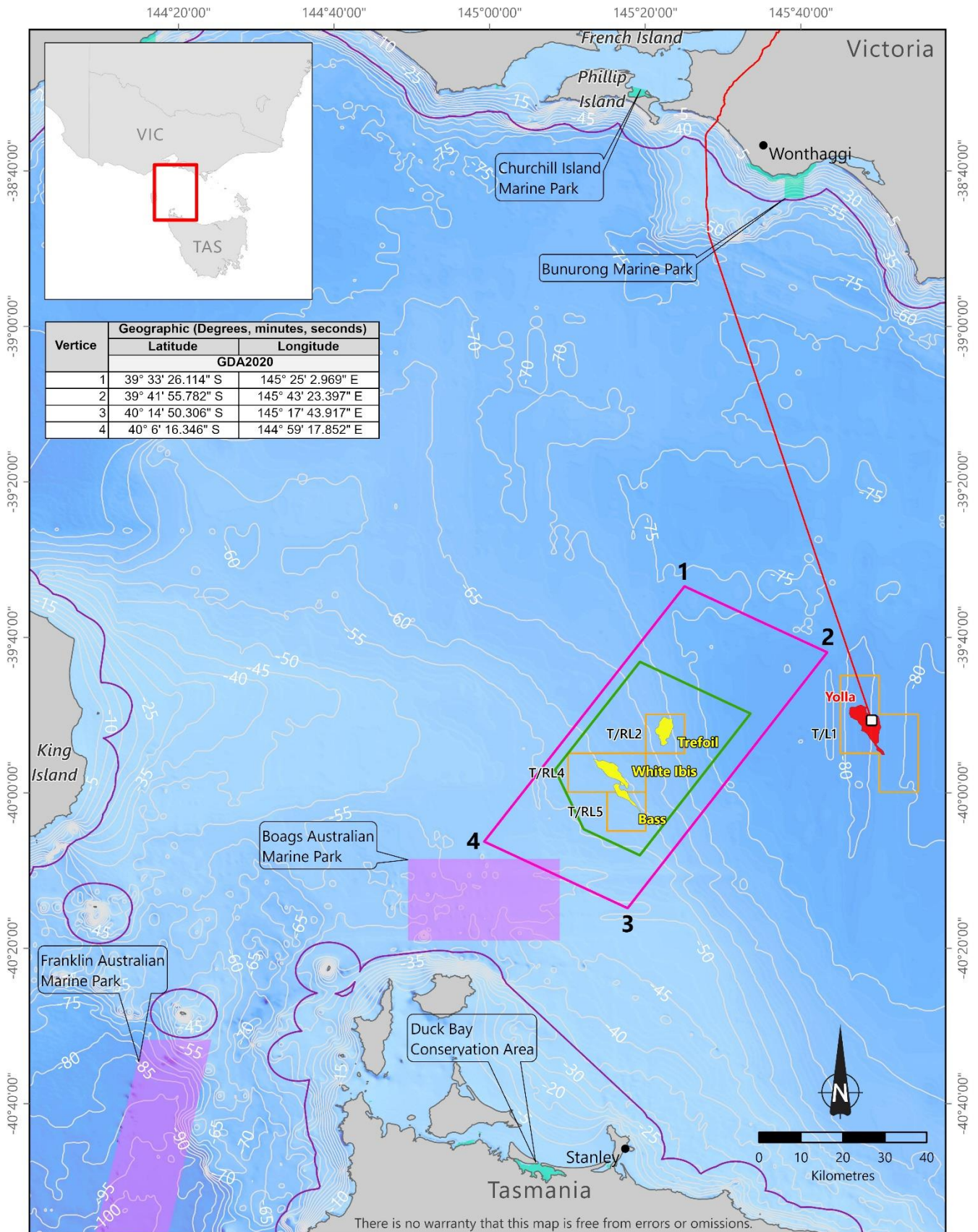
We welcome your questions and feedback

P: 1800 797 011

E: community@beachenergy.com.au

beachenergy.com.au

Prion Marine Seismic Survey - Location map



Data Sources: GP Info ('Gas field' and 'Prospect'); Department of Agriculture, Water and the Environment.

Coordinates: GDA 2020

- Yolla platform
- Gas pipeline
- Coastal Waters (3nm limit)
- Gas field
- Prospects
- Beach operated permits
- Prion seismic survey acquisition area
- Prion seismic survey operational area
- Australian marine parks
- State marine parks