

August 2021

# Commercial Fishing Adjustment Protocol

## How commercial fishers can obtain monetary adjustment if they experience reduced catch during the Sequoia seismic survey.

**The Sequoia Seismic Survey** is scheduled to take place between 15 August and 31 October 2021. The survey operational area is west of King Island (Figure 1). ConocoPhillips Australia has planned the survey timing and excised an area of deep water rock lobster/crab habitat from the operational area to minimise impacts to commercial fishing in the survey area.

**ConocoPhillips Australia is committed to the principle that a fisher should not suffer an economic loss as a direct result of the Sequoia Seismic Survey.**

The commercial fishing industry is the key stakeholder group with a commercial interest in the marine environment within and surrounding the survey operational area. ConocoPhillips Australia has put in place an adjustment protocol so that fishers who believe they have been economically impacted by the survey can submit a claim and receive monetary adjustment to offset any drop in catch during the survey.

### How does the process work?

Fishers who have fished in the survey area during the same month(s) as the survey for at least two out of the five previous years are eligible to receive monetary adjustment if they experience a reduced catch during a month when the survey is being carried out. This is available for fishing both within and outside of the survey operational area.

### How do you calculate economic loss?

The actual average catch per unit of effort (for example kilograms per pot lift) achieved by the fisher during a survey month will be compared to the average catch per unit of effort in previous years for the same month that the survey is conducted.

If the actual catch per unit of effort is less than the previous average, then monetary adjustment will be calculated by multiplying the drop in catch per unit of effort by the amount of fishing effort done in the survey month, by the market price of the catch.

### Example

#### How would reduced catch monetary adjustment apply for a rock lobster fishing boat?

'Exodus' is an owner-operator western zone rock lobster boat using 90 pots, doing 4 day trips into the survey area and pulling their pots once per day. The Exodus previously fished in the survey area during 2016 and 2019, so meets the requirement for a minimum of 2 out of the previous 5 years.

- The Exodus fished for 16 days during September 2021 using 90 pots so achieved 1440 pot lifts.
- The market price is \$50 per kilogram.
- Exodus historical kilograms per pot lift for September is 0.6 in 2016 and 0.65 in 2019 giving an average historical catch per unit of effort = 0.65 kilograms per pot lift.
- Exodus catch per unit of effort for the month of September during the Sequoia Seismic Survey is 0.4 kilograms per pot lift.
- This leaves a drop in catch per unit of effort of 0.25 kilograms per pot lift.

**Monetary adjustment due to the owner operator/licence holder of the Exodus:** Drop in Catch Per Unit of Effort (Sept'21) of (0.25kg/pot lift) x (1440 pot lifts) x (\$50/kg) = \$18,000

## What information do I need to put in a claim for reduced catch?

To lodge a claim, the person who would normally receive the money for the catch (and therefore who has suffered an economic loss) needs to provide:

- Evidence of fishing in the operational area during the same month of the survey for at least two years within the last five years
- Actual catch and effort information for the same month of the survey

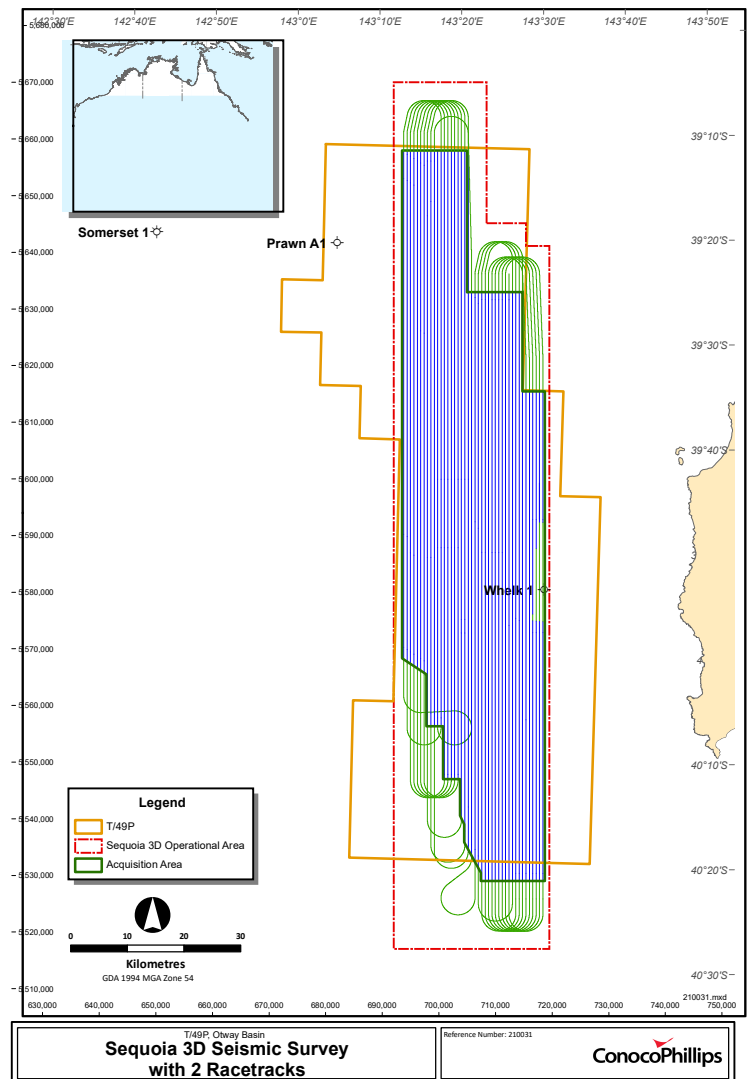
More details are set out in ConocoPhillips Australia's Commercial Fishing Adjustment Protocol where the application form is provided ([conocophillips.com.au](http://conocophillips.com.au)).

ConocoPhillips Australia will conduct adjustment assessments and provide the fisher with the assessment outcome. If the fisher is happy with the outcome, then ConocoPhillips Australia will pay out the claim as soon as possible. If the fisher disagrees with the proposed adjustment amount, then they may request an independent expert review of their claim outcome. ConocoPhillips Australia will cover the costs of an application for reduced catch up to \$2000 per application. ConocoPhillips Australia will cover the costs associated of the independent expert reviewer.

The full Commercial Fishing Adjustment Protocol is available at [www.conocophillips.com.au](http://www.conocophillips.com.au). Application forms to assist fishers in lodging claims are included in the Protocol.

Adjustment is also available for displacement of fishing activity due to the survey plus gear loss or damage in connection with survey vessels or equipment. Please refer to the Protocol for more information and application forms.

Figure 1 Sequoia 3DMSS survey area



## Helpline

Fishers with questions regarding the adjustment process or lodging a claim call 07 3182 7122 or email [sequoia@conocophillips.com.au](mailto:sequoia@conocophillips.com.au).

[conocophillips.com.au](http://conocophillips.com.au)